



# TouchMol for PowerPoint User Manual



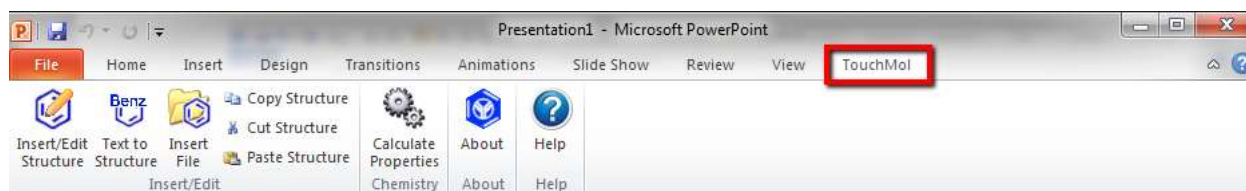
**Scilligence Corporation**  
[www.scilligence.com](http://www.scilligence.com)

## Getting Started with TouchMol for PowerPoint

- Getting Started with TouchMol for PowerPoint
- Insert/Edit Structure
- Convert Chemical Name/Identifier to Structure
- Insert Chemical File
- Calculate Properties of a Chemical Structure
- Other Editing Functions

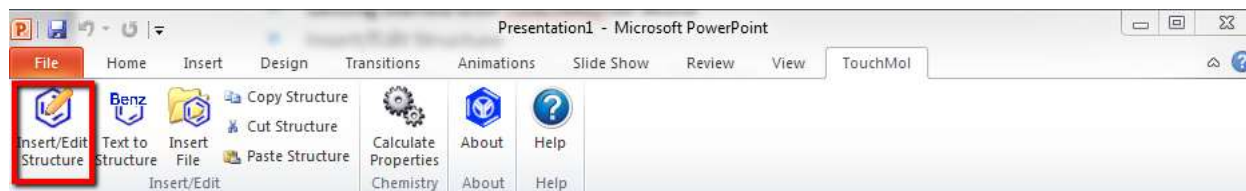
### Getting Started with TouchMol for PowerPoint

1. Click **TouchMol** tab

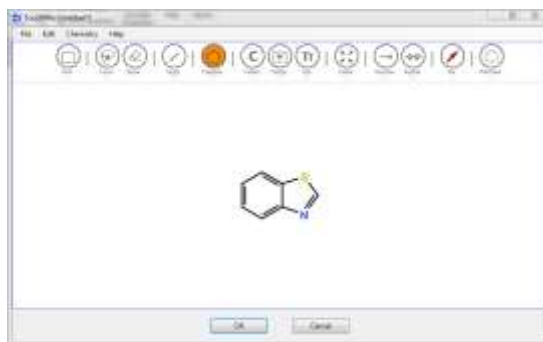


### Insert/Edit Structure

1. Select a location or a structure on a slide, then click **Insert/Edit Structure**



2. Draw chemical or biological structures on TouchMol pop-up window



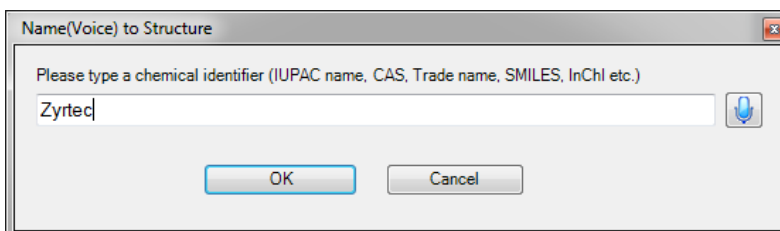
3. Click **OK**

## Convert Chemical Name/Identifier to Structure

1. Select a location on a slide, then click **Text to Structure**



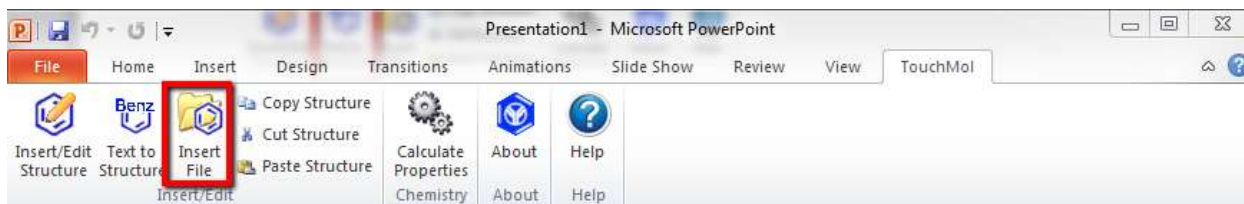
2. Input chemical name, trade name or chemical identifier such as CAS# in the pop-up box



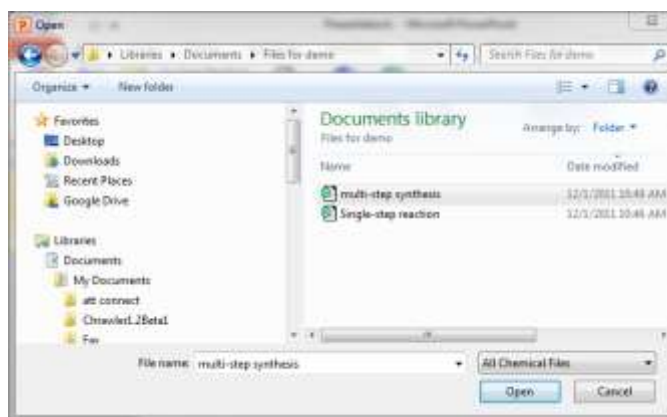
3. Click **OK**

## Insert Chemical File

1. To insert structure or reaction from other chemical file formats, click **Insert File**

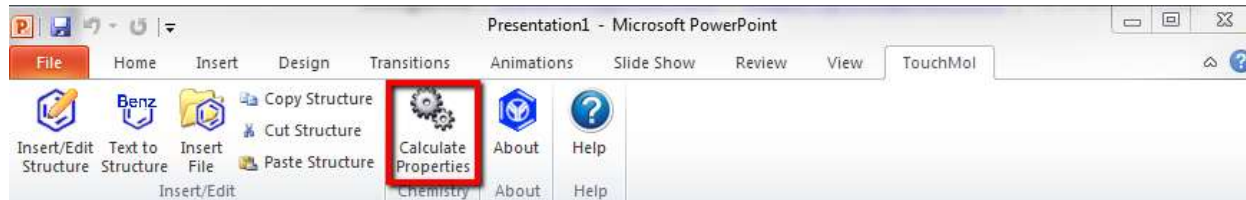


2. Select the chemical file, then click **Open**



## Calculate Properties of a Chemical Structure

1. Select a chemical structure, then click **Calculate Properties**



## Other Editing Functions

1. Copy a structure or reaction: **Ctrl-C** or click **Copy Structure**
2. Cut a structure or reaction: **Ctrl-X** or click **Cut Structure**
3. Paste a structure or reaction: **Ctrl-V** or click **Paste Structure**

