



# TouchMol for Word User Manual



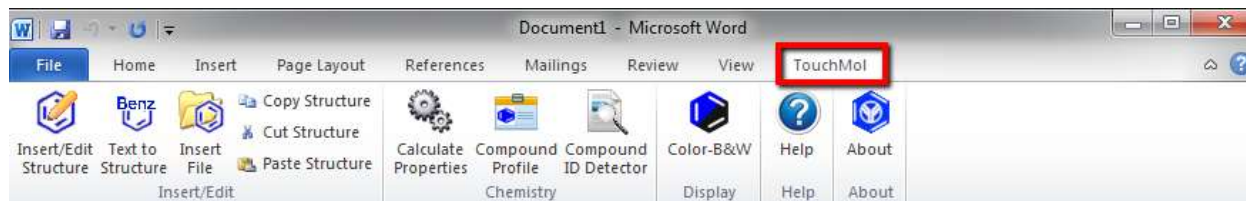
**Scilligence Corporation**  
[www.scilligence.com](http://www.scilligence.com)

## Getting Started with TouchMol for Word

- Getting Started with TouchMol for Word
- Insert/Edit Structure
- Convert Chemical Name/Identifier to Structure
- Insert Chemical File
- Switch Structure Display Modes: Color vs Black&White
- Calculate Properties of a Chemical Structure
- Show Compound Profile of a Selected Structure
- Detect Corporate Compound IDs
- Other Editing Functions

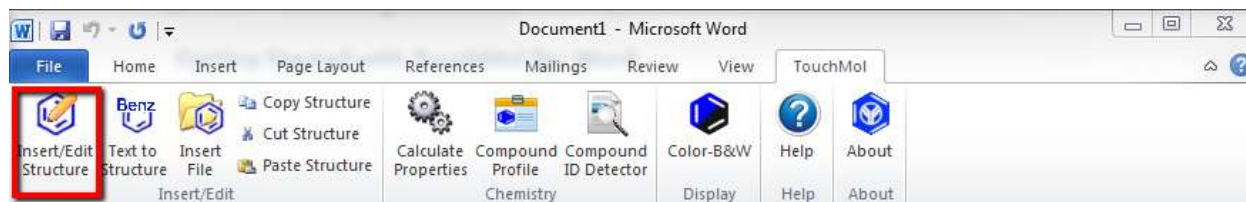
### Getting Started with TouchMol for Word

1. Click **TouchMol** tab



### Insert/Edit Structure

1. Select a location or a structure in the document, then click **Insert/Edit Structure**



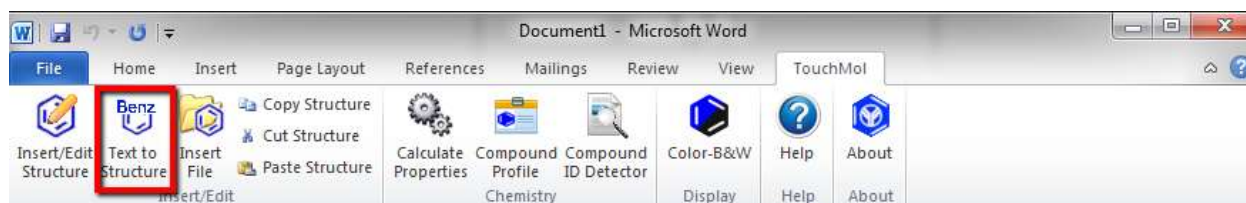
2. Draw chemical or biological structures on TouchMol pop-up window



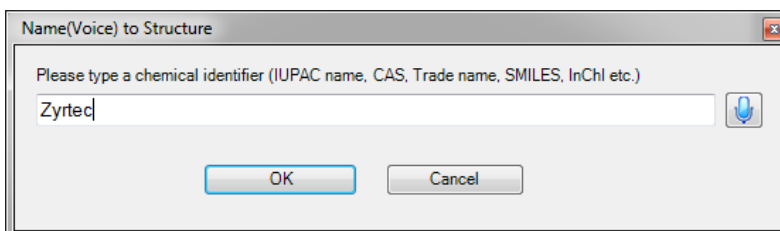
3. Click **OK**

## Convert Chemical Name/Identifier to Structure

1. Select a location in the document, then click **Text to Structure**



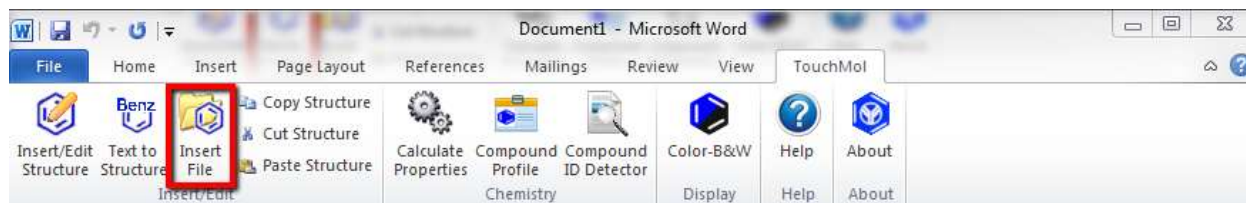
2. Input chemical name, trade name or chemical identifier such as CAS# in the pop-up box



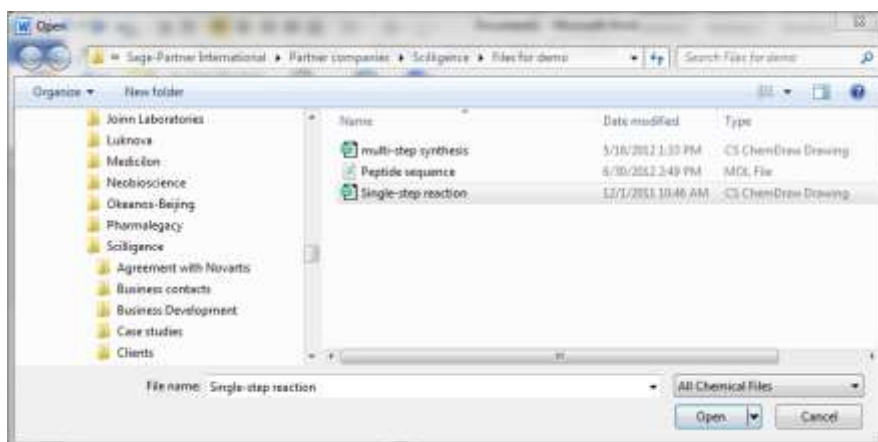
3. Click **OK**

## Insert Chemical File

1. To insert structure or reaction from other chemical file formats, click **Insert File**



2. Select the chemical file, then click **Open**



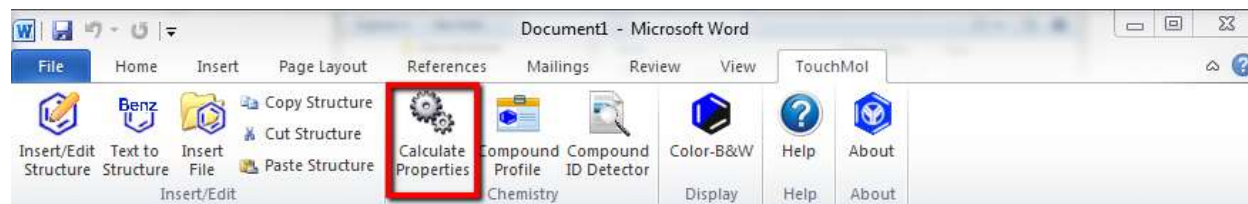
### Switch Structure Display Modes: Color vs Black&White

1. To switch structure display in the whole document between color mode and black&white mode, click **Color-B&W**



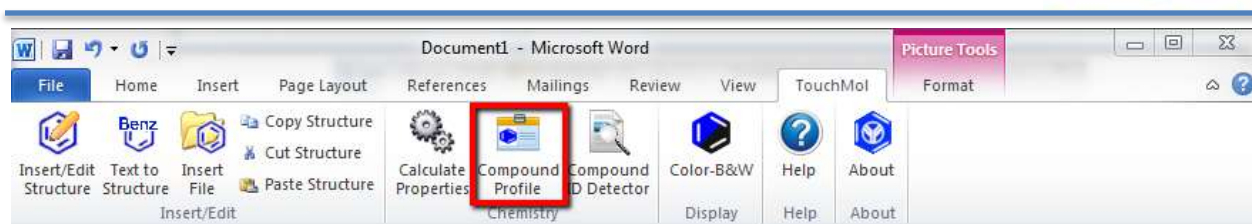
### Calculate Properties of a Chemical Structure

1. Select a chemical structure, then click **Calculate Properties**



### Show Compound Profile of a Selected Structure

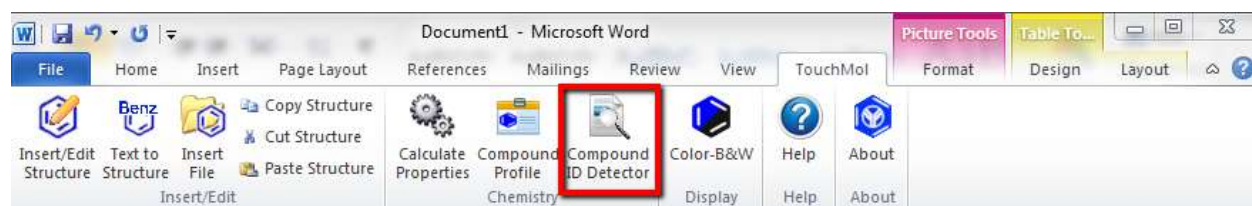
1. Select a chemical structure, then click **Compound Profile**



Note: Compound profile can include calculated properties, bioassay data from public and internal corporate databases. To access bioassay data in corporate databases, configuration of TouchMol for Word is required.

## Detect Corporate Compound IDs

1. To detect corporate compound IDs in the whole document, click **Compound ID Detector**



Note: Compound ID Detector requires configuration of TouchMol for Word to connect to corporate compound databases. All corporate compound IDs will be highlighted in the document and listed in a panel as well. Structure corresponding to a compound ID can be displayed by selecting it on the panel.

## Other Editing Functions

1. Copy a structure or reaction: **Ctrl-C** or click **Copy Structure**
2. Cut a structure or reaction: **Ctrl-X** or click **Cut Structure**
3. Paste a structure or reaction: **Ctrl-V** or click **Paste Structure**

